

ISCA Company Information

ISCA Limited is a company registered in the UK whose business name is the Independent Schools Cultural Alliance. The company was formed in 1982 to provide cultural travel opportunities to students and teachers from around the world. As well as organising specialist group travel such as theatre, drama, football, rugby and European trips, the company runs residential summer camps in the UK using an independent boarding school as a base.

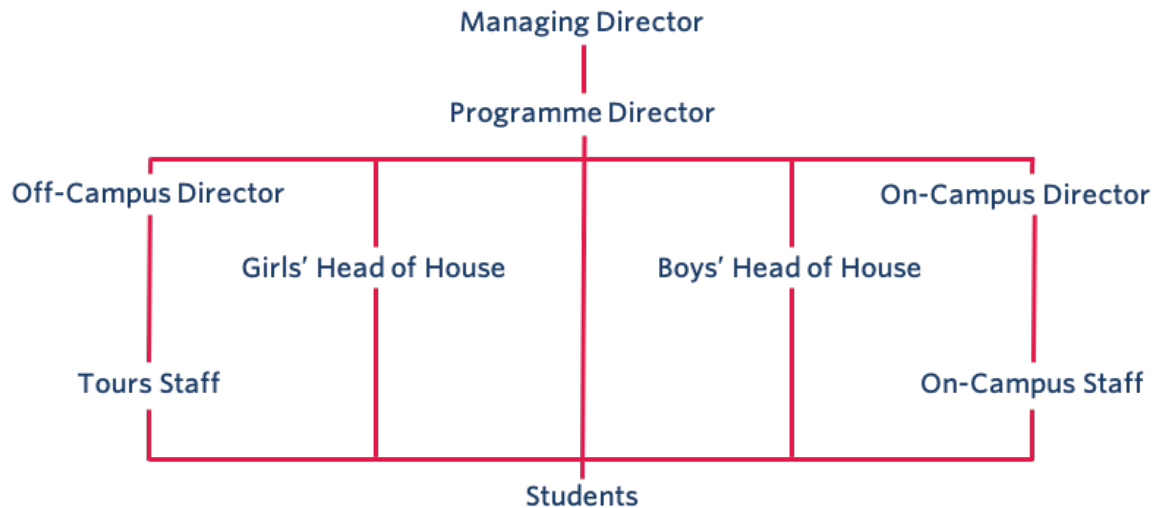
The Managing Director, Luke Liddle, and the Founding Director, Richard Woods, have over fifty years combined experience in Education and Travel. Alongside them, Freya Liddle is the General Manager and Sarah Disney is the Travel Director. All four are responsible for the day-to-day administration of the business throughout the year and additional staff are employed to run the specialist programmes. The core business of the company traditionally comes from the US and South America, with exciting new links in Australia, China, Japan and the UK.

Our KS3 Programme

ISCA's KS3 Programme is a one-week summer camp where students experience British history and culture, foster relationships and become independent in a fantastic community. Our values of broadening cultural understandings and encouraging independence are at the heart of everything we do.

The ISCA Staff

Staff based in the UK are qualified teachers, sports coaches or student helpers under supervision and are responsible for the day-to-day running of the camp. Their roles vary between organising on-campus sports and activities, running student houses and accompanying off-campus trips. The chain of responsibility is as follows:



Campus Management

The Programme Director is responsible for the safe and efficient running of the Programme. The On-Campus Director organises and co-ordinates the on-campus sports and activities (sometimes these roles are combined). The Off-Campus Director is responsible for the off-campus tours and staff. The House Heads are responsible for the efficient running of the student houses.

Programme/On-Campus Director

Key components of the programme are the sports and activities organised for the students by the ISCA staff during the evenings and on their on-campus day. These are co-ordinated by the On-Campus Director and include cricket, rugby, football, volleyball, basketball, netball, squash, tennis, table tennis, pool, climbing, drama and dances. The students also have down time when activities are not organised and can socialise with their friends in the common rooms, social centre or the nearby grounds. At these times, the On-Campus Director is responsible for ensuring that staff detailed on the duty list are present at the relevant times to keep an eye on the students in the buildings and grounds. These duties are shared between the ISCA staff.



Off-Campus Director

When the students are not on campus, they travel by coach to places of historic and cultural interest in London and the south of England. These trips, which are arranged and booked in advance, are the responsibility of the Off-Campus Director who travels in the lead coach and liaises with the coach drivers and ISCA staff to ensure punctual arrival at and departure from venues, safety on and off the coaches and the good behaviour of the students. The Off-Campus Director is helped by ISCA staff who take responsibility for other coaches. These staff are not tour guides but will impart interesting information from time to time both on and off the coaches.

Heads of House

A Head of House is allocated to each student house and responsible for its efficient operation. This involves liaising with the students and staff to ensure sensible behaviour; efficient organisation of students' laundry; effective staff supervision; use of telephones; recording of any breakages or damage within the building; swift reporting to the Charterhouse staff of any malfunctions within the building; organisation of fire drills; bringing to the attention of the Programme Director of any pastoral or disciplinary problems relating to a student or students within a group; ensuring that students are in their rooms and quiet in the evenings according to the times listed in the Daily Programme and that they get up at the correct time in the mornings (this should be arranged with the help of the ISCA staff); and ensuring that the students keep their rooms sufficiently tidy to enable the cleaners to do their jobs effectively.



Pastoral Care

ISCA staff are in loco parentis to the ISCA students and responsible for them throughout the programme. When there is an issue with a student or students of a social or disciplinary nature, this should at first be addressed by the Head of House responsible for the student or students and an attempt made to resolve it. Where an issue cannot be resolved by the Head of House it should be discussed with the Off-Campus Director or On-Campus Director depending on its nature. If the issue still cannot be resolved, it should be brought to the attention of the Managing Director who will meet with the Head of House to decide an appropriate course of action.

On-Campus Sports and Activities

These are under the direction of the On-Campus Director. It is not the intention to teach sports to a high standard of proficiency but simply to introduce the students to many different sports and activities. Activity sessions during the on-campus day are compulsory but the students are not pushed and are given every encouragement to participate. The activities are supervised by ISCA staff, most of whom are proficient in first aid. Charterhouse staff are also available and can be summoned from the nearby sports centre in an emergency. When the students are using the swimming pool, there is always a lifeguard present and an ISCA member of staff on duty to ensure good behaviour. In the evenings voluntary sports and activities are organised as well as movies, table tennis, pool and swimming. The students can also socialise in the ISCA social centre. At all times there are ISCA staff on duty around the campus. If the weather is poor, then use is made of the indoor sports centre.

ISCA 02/09/2021